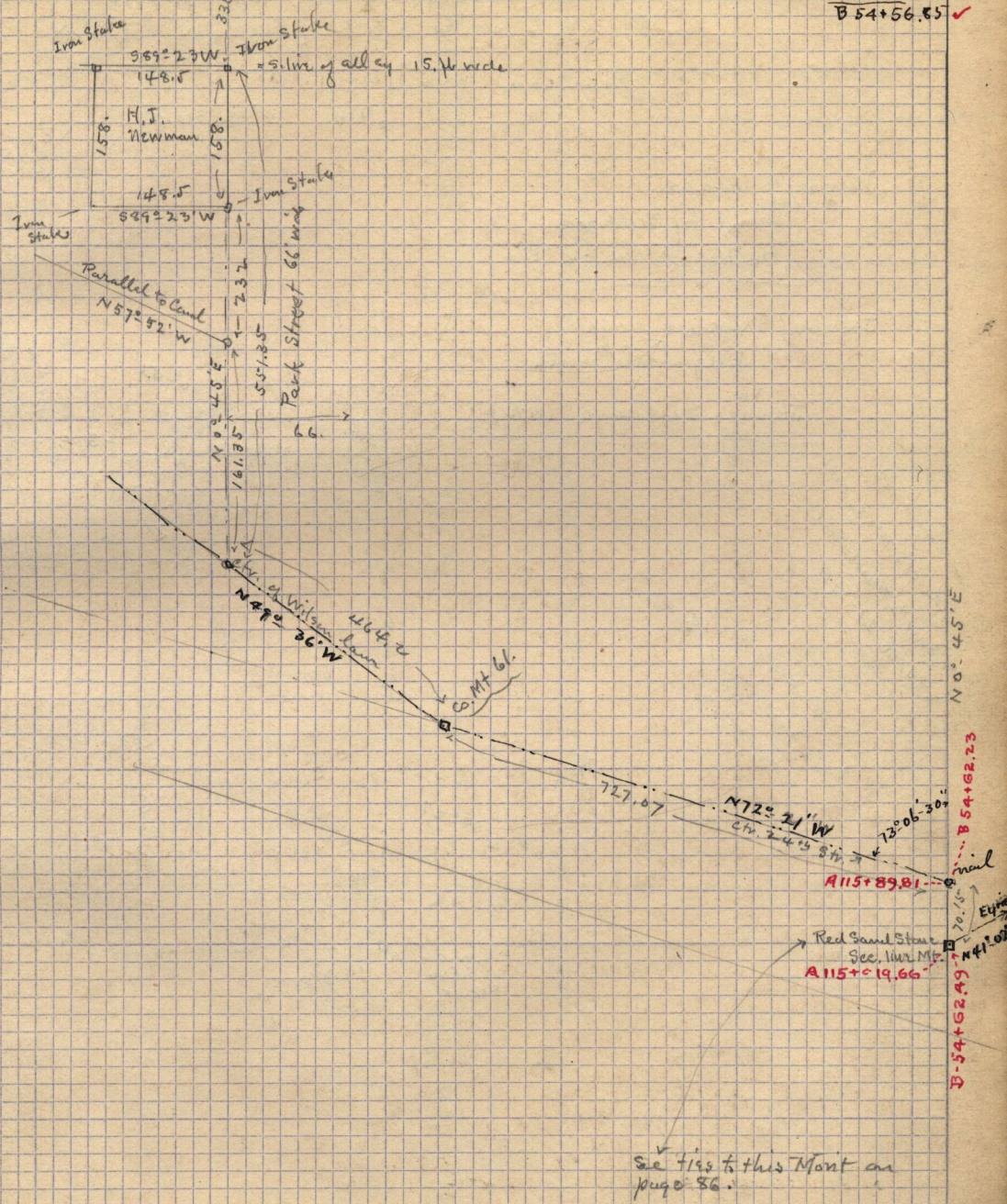


Sec. 27-1710
 Survey in S.E. 1/4 Sec. 30 T. 6. N. R. 11. W.
 Total 2682.8 ft
 1053.6
 589° 23' W
 H. J. Newman
 (87) 1/4 in

A 130+11.45
 B 54+59.14
 B 54+56.85 ✓



N 0° 45' E
 B 54+62.3
 B 54+62.49
 Nail
 Eye
 70.75
 N 41° 02'